

SHEKHAWATI INSTITUTE



Alumni Feedback 2022-2023 - Feedback Analysis Report

Academic Year : 2022-2023

| S.No | Question's | Excellent | Very Good | Good | Fair | Poor | Total Weightage | Percentage | 3-Scale Weightage |
|------|--|-----------|-----------|------|------|------|-----------------|------------|-------------------|
| 1 | Academic achievement and success in co-curricular and extracurricular activities were enhanced by teachers and the mentorship they provided. | 110 | 55 | 9 | 6 | 2 | 811 | 89.12% | 2.67 |
| 2 | Instructors have embraced both in-person instruction and virtual learning. | 46 | 117 | 15 | 2 | 2 | 749 | 82.31% | 2.47 |
| 3 | Values, ethics, and attitudes are shaped in the personality by academics, co-curricular activities, and the environment. | 32 | 59 | 81 | 6 | 4 | 655 | 71.98% | 2.16 |
| 4 | ICT tools, LCD projectors, smart boards, wireless internet, etc. are all installed in classrooms and labs. | 27 | 71 | 54 | 28 | 2 | 639 | 70.22% | 2.11 |

| S.No | Question's | Excellent | Very Good | Good | Fair | Poor | Total Weightage | Percentage | 3-Scale Weightage |
|----------------------|--|-----------|-----------|------|------|------|-----------------|---------------|-------------------|
| 5 | Good library resources are available, including a vast collection of books, eBooks, and e-Journals for research and self-study. | 30 | 74 | 49 | 27 | 2 | 649 | 71.32% | 2.14 |
| 6 | The co-curricular activity initiatives aided in the development of innate abilities and the achievement of recognition. | 39 | 68 | 57 | 16 | 2 | 672 | 73.85% | 2.22 |
| 7 | The dining, hostel, canteen, and restroom facilities are clean and well-maintained. | 34 | 65 | 55 | 25 | 3 | 648 | 71.21% | 2.14 |
| 8 | Campus that is green, clean, devoid of plastic, and environmentally friendly | 23 | 71 | 60 | 23 | 5 | 630 | 69.23% | 2.08 |
| 9 | Participating in inter-institutional events and preserving good health were made easier with the support of sports, games, and gym facilities. | 21 | 82 | 56 | 21 | 2 | 645 | 70.88% | 2.13 |
| 10 | Social responsibility was ingrained through the NCC and other outreach programs. | 35 | 57 | 66 | 24 | 0 | 649 | 71.32% | 2.14 |
| AVERAGE SCORE | | | | | | | 674.70 | 74.14% | 2.22 |



Authorized Signature

Dr. Surjeet Kumar
 UGC-NET, Ph.D
 Principal
 Shekhawati Institute
 Sikar (Raj.)



SHEKHAWATI INSTITUTE

An ISO 9001 : 2001 Certified Institute

(Approved by Govt. of Rajasthan & Affiliated to Pt. Deendayal Upadhyaya Shekhawati University, Sikar)

7665010109

www.shekhawatiinstitute.com
ranjeet3333@rediffmail.com

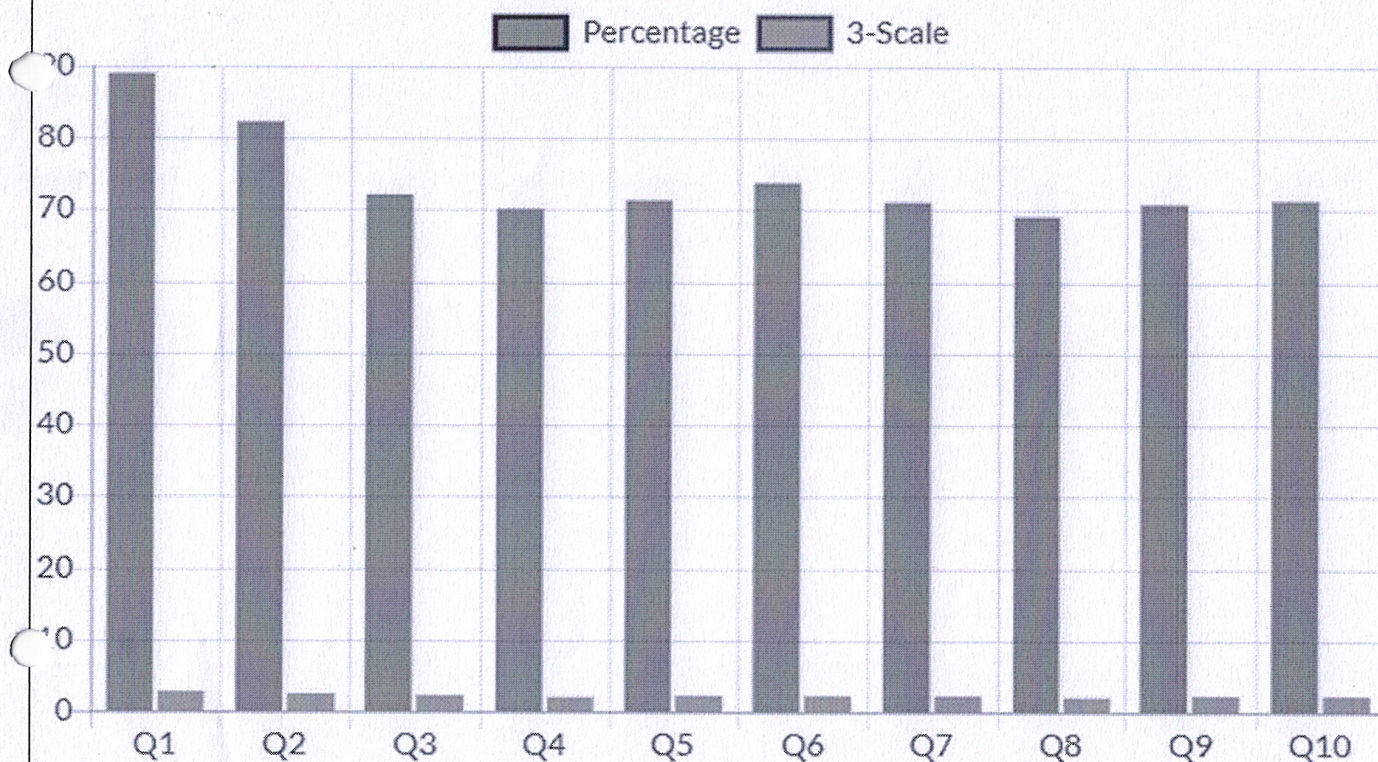
Behind Circuit House, Jaipur Road
Sikar (Raj.)-332001

ACADEMIC YEAR 2022-23

TOTAL RESPONSE: 182

DATE: 21.04.2023

ALUMNI FEEDBACK ANALYSIS REPORT-CHART



Dr. Surjeet Kumar
UGC-NET, Ph.D
Principal
Shekhawati Institute
Sikar (Raj.)



SHEKHAWATI INSTITUTE

An ISO 9001 : 2001 Certified Institute

(Approved by Govt. of Rajasthan & Affiliated to Pt. Deendayal Upadhyaya Shekhawati University, Sikar)

7665010109


www.shekhawatiinstitute.com
ranjeet3333@rediffmail.com

Behind Circuit House, Jaipur Road
Sikar (Raj.)-332001

SUGGESTION

| S. No | SUGGESTION |
|-------|---|
| 1 | Arrange alumni meet for all students. |
| 2 | Internships help in enriching knowledge and skill required for job. |
| 3 | Conduct Coaching classes for government exam. |
| 4 | Improve student's involvement in social activities. |
| 5 | More no. industrial visit to needed. |




Dr. Surjeet Kumar
UGC-NET, Ph.D
Principal
Shekhawati Institute
Sikar (Raj.)