

# SHEKHAWATI INSTITUTE



## Students Feedback 2022-23 - Feedback Analysis Report

Academic Year : 2022-2023

S.No	Question's	Excellent	Very Good	Good	Fair	Poor	Total Weightage	Percentage	3-Scale Weightage
1	Teachers cover the syllabus with clear explanations on all topics and helps to improve students performance.	554	557	91	1	0	5273	87.66%	2.63
2	Teachers clarify students doubts and take remedial measures for weak students	700	434	68	1	0	5442	90.47%	2.71
3	Teachers mentor students on regular basis to improve the academic performance and motivate them to participate in co-curricular and extra-curricular activities.	166	702	324	11	0	4632	77.01%	2.31
4	Laboratory experiments enable experiential learning to understand concepts.	87	440	653	22	1	4199	69.81%	2.09
5	Good Library facility for self learning	176	559	423	43	2	4473	74.36%	2.23




S.No	Question's	Excellent	Very Good	Good	Fair	Poor	Total Weightage	Percentage	3-Scale Weightage
6	Well furnished hostel and well hygienic mess and canteen	290	551	329	32	1	4706	<b>78.24%</b>	2.35
7	High speed Wifi facilities are available in the campus	249	547	353	54	0	4600	<b>76.48%</b>	2.29
8	Sports & Game facilities give good opportunities to students to explore themselves	193	500	462	46	2	4445	<b>73.90%</b>	2.22
9	Mid term exam are periodically conducted towards students continuous evaluation	171	535	439	58	0	4428	<b>73.62%</b>	2.21
10	Toilets/Washrooms are hygienic and well maintained.	211	510	419	62	1	4477	<b>74.43%</b>	2.23
11	Well maintained Gym and Yoga Centers are available	202	527	415	58	1	4480	<b>74.48%</b>	2.23
12	Clean and Green Campus; Plastic-free and eco-friendly campus	183	540	418	62	0	4453	<b>74.03%</b>	2.22
13	Institute have good transport facilities and proximity to public transport	202	525	403	72	1	4464	<b>74.21%</b>	2.23



S.No	Question's	Excellent	Very Good	Good	Fair	Poor	Total Weightage	Percentage	3-Scale Weightage
14	Value added programs are useful to strengthen technical knowledge and skills which in turn helps towards employability	242	506	398	56	1	4541	75.49%	2.26
15	Equipment and Computers are adequate and meet students requirements.	181	611	377	34	0	4548	75.61%	2.27
AVERAGE SCORE							4,610.73	76.65%	2.30



Authorized Signature

  
**Dr. Surjeet Kumar**  
Authorized Person  
UGC-NET, Ph.D  
Principal  
Shekhawati Institute  
Sikar (Raj.)





# SHEKHAWATI INSTITUTE

An ISO 9001 : 2001 Certified Institute

(Approved by Govt. of Rajasthan & Affiliated to Pt. Deendayal Upadhyaya Shekhawati University, Sikar)

7665010109

www.shekhawatiinstitute.com  
ranjeet3333@rediffmail.com

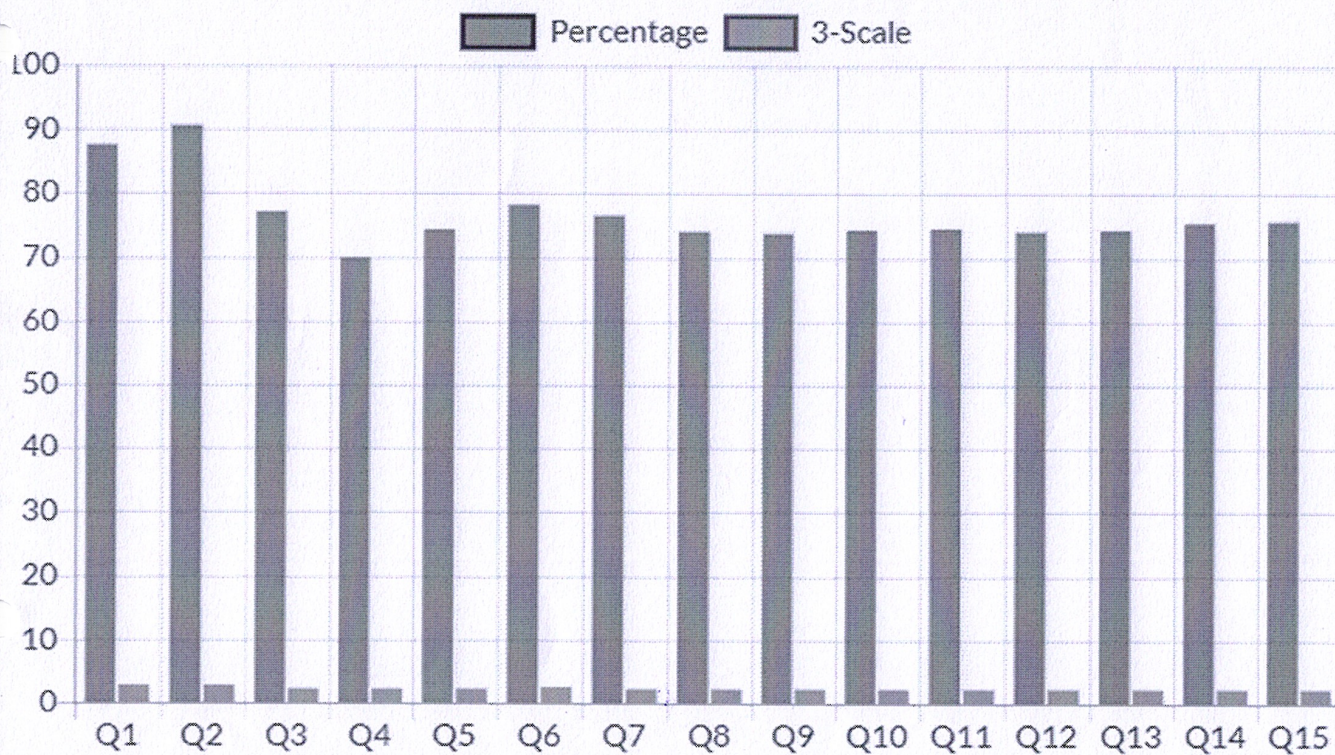
Behind Circuit House, Jaipur Road  
Sikar (Raj.)-332001

**ACADEMIC YEAR 2022-23**

**TOTAL RESPONSE: 1203**

**DATE: 21.04.2023**

## STUDENT FEEDBACK ANALYSIS REPORT-CHART



**Dr. Surjeet Kumar**  
UGC-NET, Ph.D  
Principal  
Shekhawati Institute  
Sikar (Raj.)





# SHEKHAWATI INSTITUTE

An ISO 9001 : 2001 Certified Institute

(Approved by Govt. of Rajasthan & Affiliated to Pt. Deendayal Upadhyaya Shekhawati University, Sikar)

7665010109

[www.shekhawatiinstitute.com](http://www.shekhawatiinstitute.com)  
[ranjeet3333@rediffmail.com](mailto:ranjeet3333@rediffmail.com)

Behind Circuit House, Jaipur Road  
Sikar (Raj.)-332001

## Suggestion

S. No	SUGGESTION
1	Increase a greater number of certificate and add on course.
2	Encourage students to do more Extracurricular activities.
3	Canteen facilities are needed
4	More no. of books must be added on to the library



**Dr. Surjeet Kumar**  
UGC-NET, Ph.D  
Principal  
Shekhawati Institute  
Sikar (Raj.)